



# CAREERS AT HYTROL



## ACCOUNTANT

MINIMUM EDUCATION: BACHELOR'S DEGREE

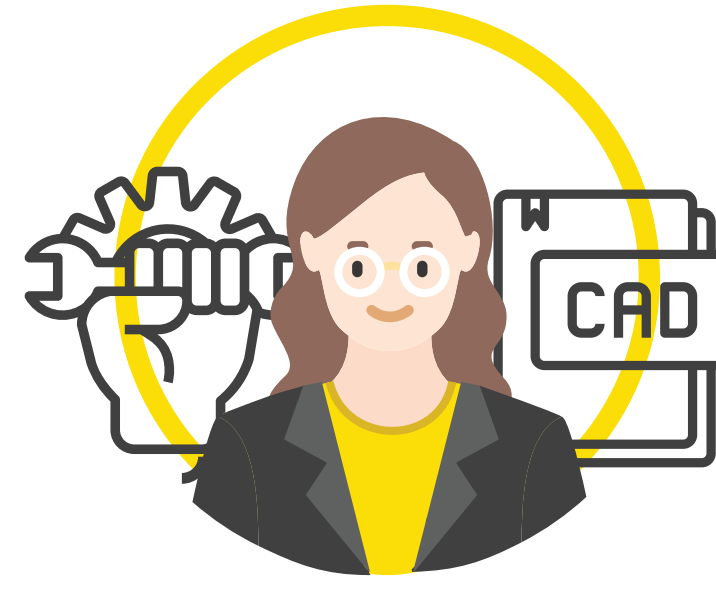
Helps businesses make financial decisions by collecting, tracking, correcting, and communicating the financial position of the company.



## BUSINESS EXECUTIVE

MINIMUM EDUCATION: BACHELOR'S DEGREE, MASTER'S DEGREE MAY BE REQUIRED

Establishes corporate goals, policies, and procedures while assisting companies in acquiring new customers and selling additional products.



## CAD TECHNICIAN

MINIMUM EDUCATION: ASSOCIATE DEGREE

Creates electronic design plans for buildings and machinery using computer software.



## CUSTOMER SERVICE REP

MINIMUM EDUCATION: HIGH SCHOOL DIPLOMA + TRAINING

Interacts with customers to handle complaints, process orders, and provide information about an organization's products and services. Opportunities to use multilingual skills.



## ENGINEER

MINIMUM EDUCATION: BACHELOR'S DEGREE

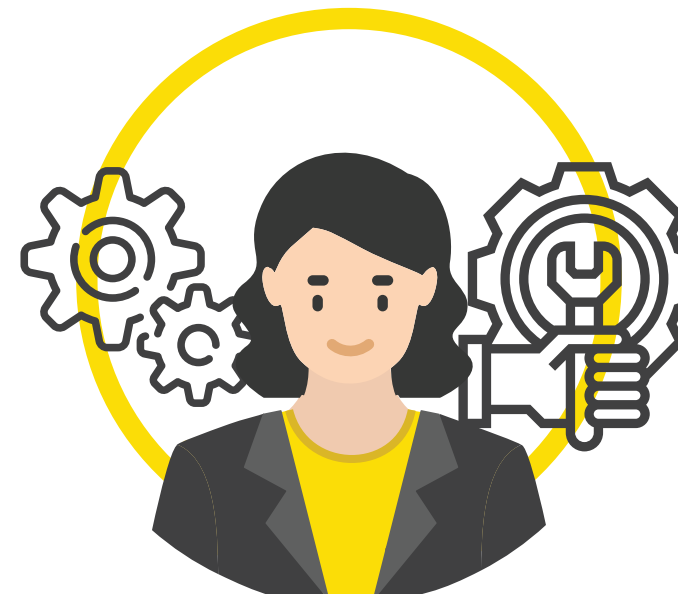
Invents, designs, analyzes, builds, and tests machines, systems, structures, gadgets, and materials.



## HUMAN RESOURCES

MINIMUM EDUCATION: BACHELOR'S DEGREE

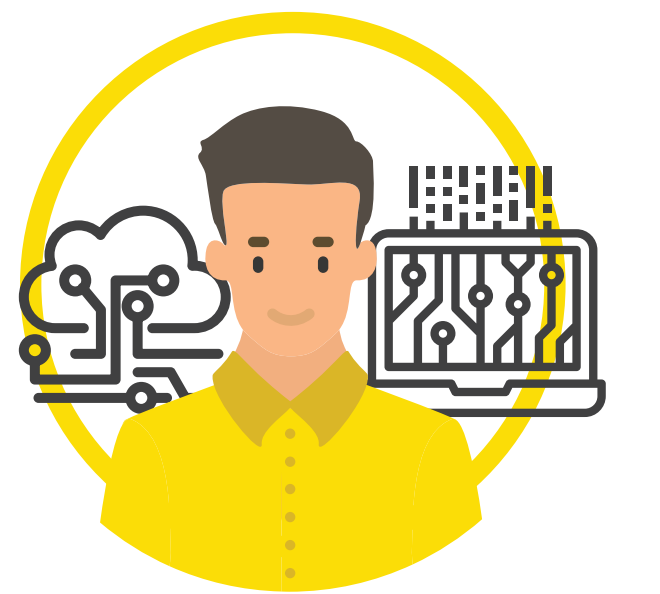
Recruits, interviews, and hires new staff, while helping the organization increase employee productivity, morale, and retention.



## INDUSTRIAL MAINTENANCE

MINIMUM EDUCATION: HIGH SCHOOL DIPLOMA + TECHNICAL CERTIFICATE

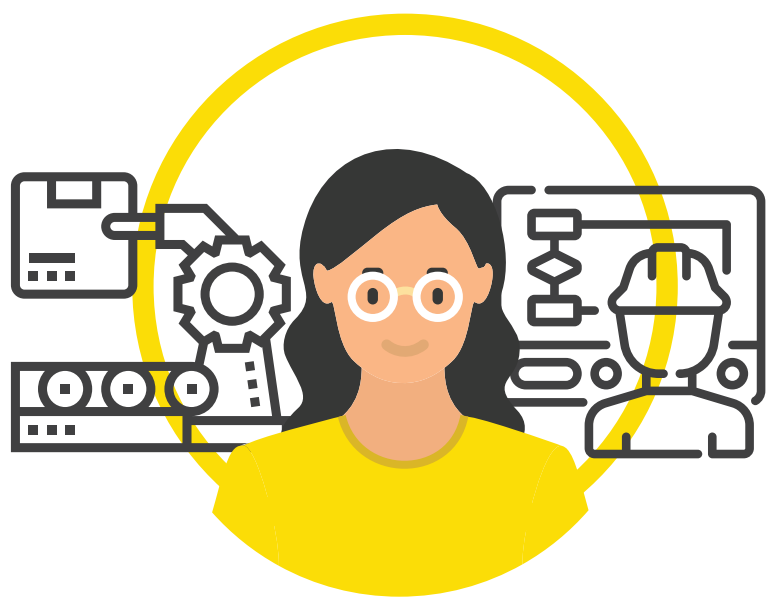
Installs, repairs, and maintains commercial or industrial machinery in buildings, plants, or manufacturing settings.



## IT/IS TECHNICIAN

MINIMUM EDUCATION: ASSOCIATE DEGREE

Diagnoses, repairs, and maintains hardware and software components to ensure the smooth running of computer systems.



## MACHINE OPERATOR

MINIMUM EDUCATION: HIGH SCHOOL DIPLOMA + TECHNICAL CERTIFICATE OR TRAINING

Sets up, operates, and maintains machinery, usually in a manufacturing setting.



## MARKETING

MINIMUM EDUCATION: BACHELOR'S DEGREE

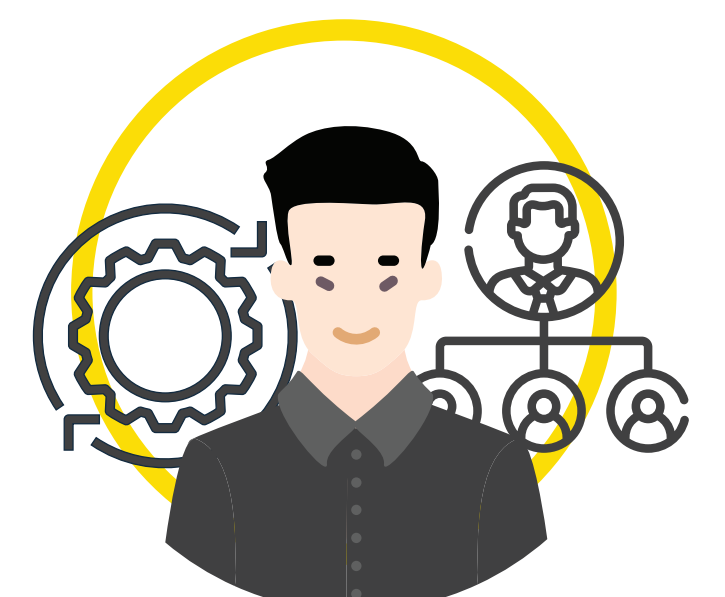
Identifies the strategies and techniques used to attract customers to a business. Work may include graphic design, public relations, digital marketing, and more.



## MECHATRONICS TECHNICIAN

MINIMUM EDUCATION: ASSOCIATE DEGREE IN MECHANICAL TECH FIELD

Takes care of "smart" machines.



## OPERATIONS MANAGER

MINIMUM EDUCATION: BACHELOR'S DEGREE

Oversees operational systems, processes, and infrastructure while looking for opportunities of improvement or revision.



## PRODUCTION SUPERVISOR

MINIMUM EDUCATION: ASSOCIATE DEGREE

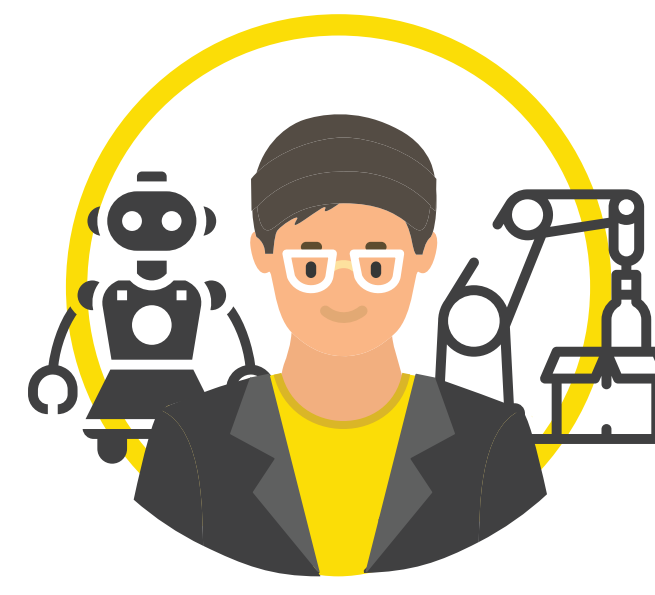
Helps manufacturing staff achieve company goals by communicating expectations, planning, monitoring, and evaluating job results.



## QUALITY CONTROL ANALYST

MINIMUM EDUCATION: ASSOCIATE DEGREE

Checks the safety, health, functionality, and overall quality of products like food, clothing, and electronics.



## ROBOTICS TECHNICIAN

MINIMUM EDUCATION: ASSOCIATE DEGREE IN MECHANICAL TECH FIELD

Builds, tests, repairs, and takes care of robots.



## TECHNICAL SERVICES REP

MINIMUM EDUCATION: HIGH SCHOOL DIPLOMA + TRAINING

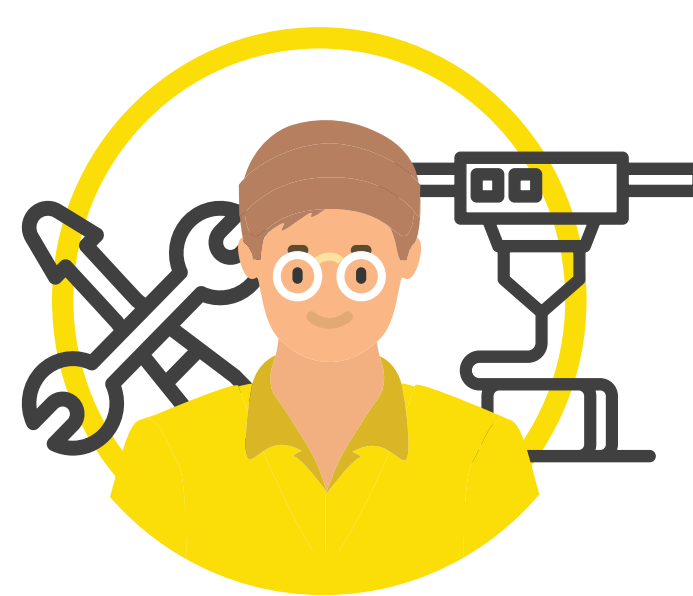
Assists customers with scientific or technology-based products and services. Opportunities to use multilingual skills.



## TECHNICAL WRITER

MINIMUM EDUCATION: BACHELOR'S DEGREE

Creates technical documents, manuals, textbooks, proposals, marketing materials, and much more.



## TOOL AND DIE MAKER

MINIMUM EDUCATION: HIGH SCHOOL DIPLOMA + TRAINING

Creates tools or molds called dies to shape and create objects.

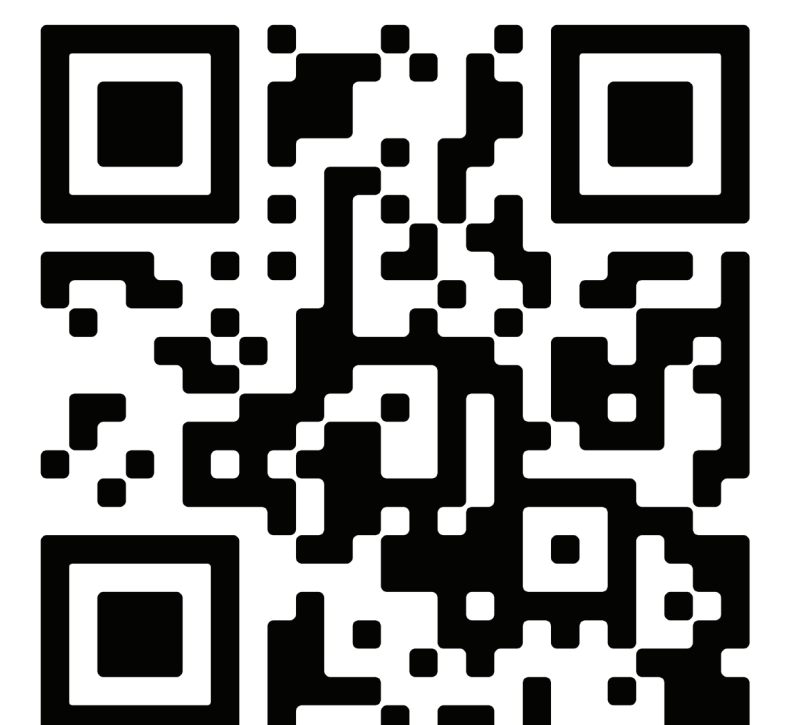


## WELDER

MINIMUM EDUCATION: HIGH SCHOOL DIPLOMA + TECHNICAL CERTIFICATE IN WELDING

Welds things! Welding is the process of heating metal to the point of melting then joining the pieces together.

## APPLY HERE



CAREERS.HYTROL.COM